



MONTHLY MEMBERSHIP PROGRESS REPORT

District 26 M6

Results as of: 4/30/2017

GMT: HAL GRIFFIN

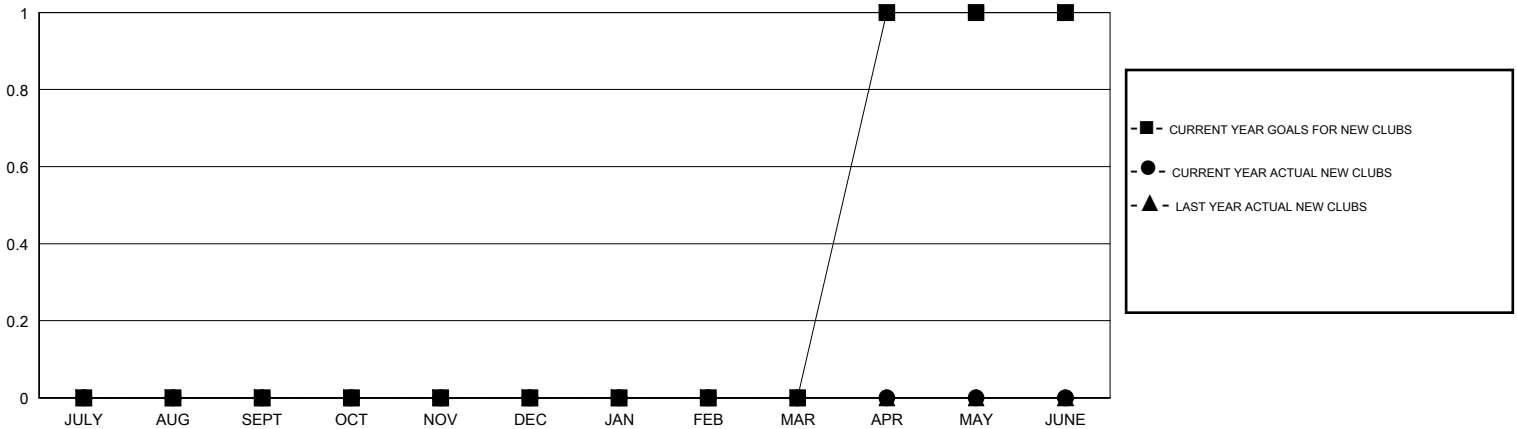
LOCATION MISSOURI

GMT CA

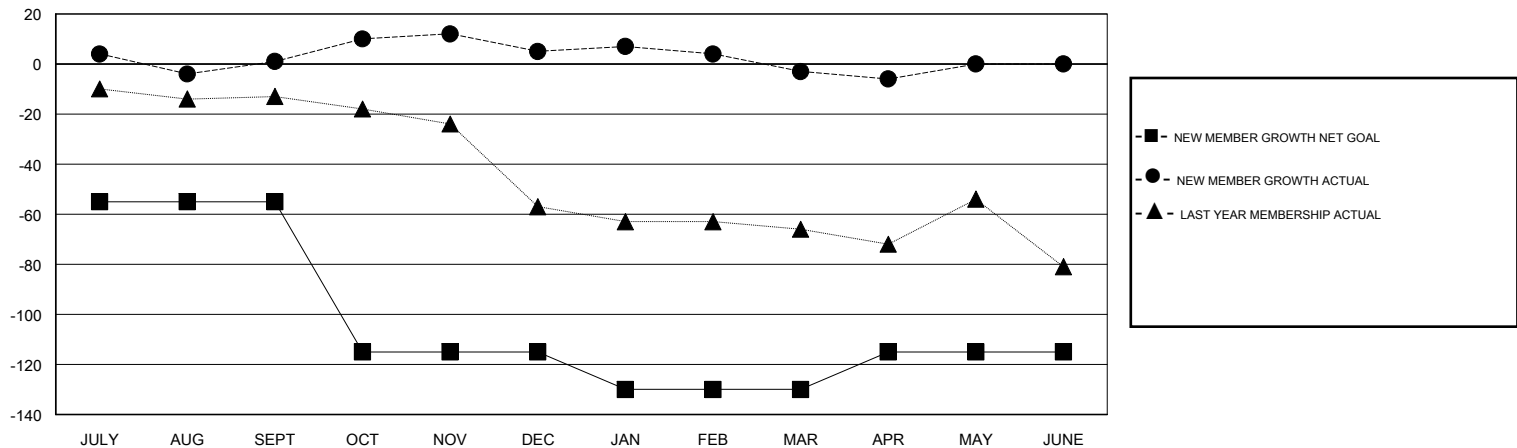
Clubs			
RESULTS FOR 2016-2017			
QUARTER	NEW CLUB GOAL	NEW CLUBS	DROPPED CLUBS
JULY/AUG/SEPT	0	0	0
OCT/NOV/DEC	0	0	0
JAN/FEB/MAR	0	0	0
APR/MAY/JUNE	1	0	0

Members			
RESULTS FOR 2016-2017			
QUARTER	NEW MEMBER GROWTH NET GOAL (not reinstated or transfers)	NEW MEMBER GROWTH ACTUAL (not reinstated or transfers)	DROPPED MEMBERS ACTUAL (including transfers)
JULY/AUG/SEPT	-55	25	24
OCT/NOV/DEC	-60	24	20
JAN/FEB/MAR	-15	26	34
APR/MAY/JUNE	15	11	14

GOALS AND ACTUAL NEW CLUBS CUMULATIVE



GOALS AND ACTUAL MEMBERS CUMULATIVE



DROPPED CLUBS: 0	31 CLUBS OF 46 ADDED 1 OR MORE NEW MEMBERS	<u>GENDER DISTRIBUTION</u>	
DROPPED MEMBERS		MALE	786 (69.62%)
DECEASED	14	FEMALE	343 (30.38%)
CLUB CANCELLED	0	TOTAL FAMILY UNIT MEMBERS	
OTHER	78	249	
TOTAL	92	FAMILY MEMBERS PAYING HALF DUES	
		126	

[CLICK HERE FOR CUMULATIVE MEMBERSHIP DATA](#)